



## Purple Mottled Shore Crab

*Cyclograpsus granulatus* Milne Edwards, 1853 Crustacea: Decapoda: Brachyura:

Varunidae

### Status

Native to Australia

<b>Other Common Names</b>	<i>None Listed</i>
<b>Scientific Synonyms</b>	<i>None Listed</i>
<b>Host Types</b>	Marine
<b>Distribution - Regions</b>	Australasian - Oceanian
<b>Distribution - Notes</b>	
<b>Diagnostic Characters:</b>	<p><b>Description:</b> the frontal region of the carapace is granulate, the lateral margins are convex, and without teeth; the sternum, maxilliped 3 and bases of walking legs have short, sparse hairs;</p> <p><b>Size:</b> to 38 mm wide;</p> <p><b>Colour:</b> variable, carapace mottled red-bornw or purple on yellow.</p>
<b>Broad Sweep</b>	Marine
<b>Commodity</b>	Marine
<b>Specifics</b>	
<b>Specimen Contact Point</b>	discoverycentre@museum.vic.gov.au
<b>Name</b>	Gary Poore
<b>Web links</b>	<i>None Listed</i>
<b>Padil links</b>	Pacific Crab

Japanese Shore Crab  
Mottled Shore Crab  
Four-Toothed Shore Crab

---

**References**

Poore, G.C.B. 2004. *Marine decapod Crustacea of southern Australia. A guide to identification (with chapter on Stomatopoda by Shane Ahyong)*. CSIRO Publishing: Melbourne. 574 pp.

---

**Acknowledgements**

---

**Citation**

Dane, E. & Poore, G.C.B. (2008) Purple Mottled Shore Crab (*Cyclograpsus granulatus*) Pest and Diseases Image Library. Updated on 12/06/2008 1:11:13 PM. Available online: <http://www.padil.gov.au>

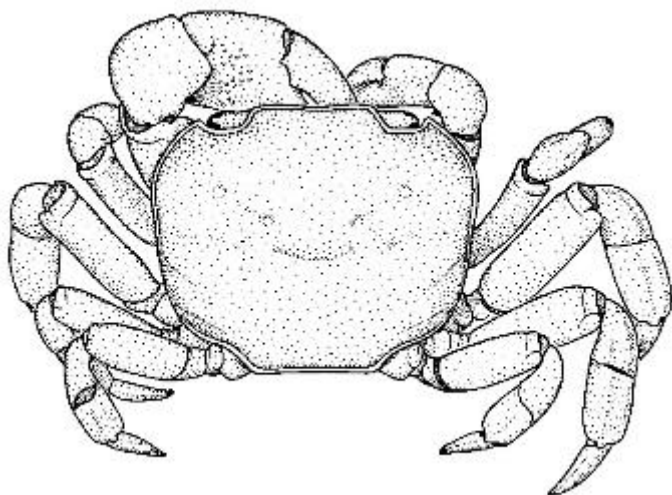
---

**Last Updated**

12/06/2008 1:11:13 PM

## Diagnostic Images

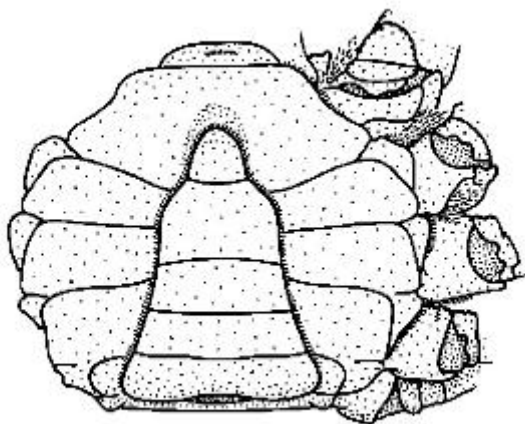
### carapace



**Caption:** Drawing showing carapace shape

**Source:** Graham Miledge (artist),  
Museum Victoria

## Tail



**Caption:** Drawing of the thoracic sternum of *Cyclograpsus granulatus*

**Source:** Graham Miledge (artist),  
Museum Victoria

## Overview Images

## Dorsal



**Caption:** Dorsal view of *Cyclograpsus granulatus*

**Source:** Michael Marmach, Museum Victoria



Full size images available at <http://www.padil.gov.au>.