



## New Zealand Half Crab

*Petrolisthes elongatus* (Milne Edwards, 1837) Crustacea: Decapoda: Anomura:

Porcellanidae

### Status

Exotic (established in Australia)

<b>Other Common Names</b>	<i>None Listed</i>
<b>Scientific Synonyms</b>	<i>None Listed</i>
<b>Host Types</b>	Marine
<b>Distribution - Regions</b>	Australasian - Oceanian
<b>Distribution - Notes</b>	<p>New Zealand, eastern Tas.; intertidal rocky shores.</p> <p><i>Petrolisthes</i> is a large genus with 35 species in the Indo-West Pacific of which at least ten occur in northern Australia (Haig, 1965, 1972). Only one occurs in southern Australia. It has been confirmed that this species was introduced to Tasmania from New Zealand, probably with ballast rocks at the end of the 1800s (King, 1997).</p>
<b>Diagnostic Characters:</b>	<p>Carapace rounded, about as broad as long; finely granulate, <b>without dorsal spines</b>, without supraocular spine, front broadly rounded-triangular, <b>with smooth margins</b>. Cheliped <b>carpus inner margin with obsolete ridge proximally</b>, outer margin with 1–2 weak spines and sharp distal angle; propodus unarmed, weakly granulate. Merus of walking legs unarmed. <b>Telson with 7 plates</b>.</p> <p>Up to 21 mm long. Reddish-yellow.</p>
<b>Broad Sweep</b>	Marine
<b>Commodity</b>	Marine
<b>Specifics</b>	
<b>Specimen Contact Point</b>	discoverycentre@museum.vic.gov.au
<b>Name</b>	Gary Poore
<b>Web links</b>	<i>None Listed</i>

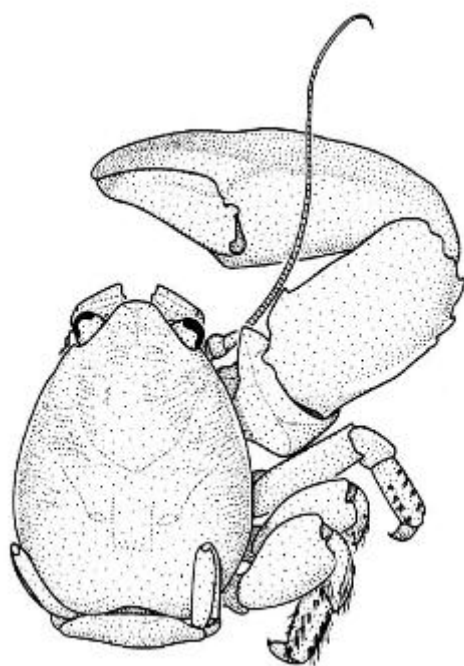
<b>Padil links</b>	Spiny Porcelain Crab
<b>References</b>	<p>The information here is adapted from:</p> <p>Poore, G. C. B. (2004) <i>Marine decapod Crustacea of southern Australia. A guide to identification (with chapter on Stomatopoda by Shane Ahyong)</i>. Melbourne: CSIRO Publishing.</p> <p>Introduction to Australia based on:</p> <p>King, R. (1997) Systematic relationships between Tasmanian and New Zealand populations of <i>Petrolisthes elongatus</i> (Crustacea: Anomura: Porcellanidae). <i>In: Zoology Department</i>. The University of Melbourne, Melbourne, 37 pp.</p>
<b>Acknowledgements</b>	
<b>Citation</b>	<p>Poore, G.C.B &amp; Wilson, R. (2008) New Zealand Half Crab (<i>Petrolisthes elongatus</i>) Pest and Diseases Image Library. Updated on 24/04/2008 4:46:45 PM. Available online: <a href="http://www.padil.gov.au">http://www.padil.gov.au</a></p>
<b>Last Updated</b>	24/04/2008 4:46:45 PM

## Diagnostic Images

### carapace

**Caption:** this drawing will be replaced by a photograph of live *Petrolisthes elongatus* when permissions are arranged

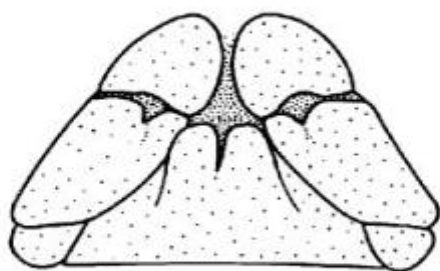
**Source:** Graham Milledge (artist), Museum Victoria



### **Tail**

**Caption:** Drawing of telson of *Petrolisthes elongatus*

**Source:** Graham Milledge (artist),  
Museum Victoria



## Overview Images

### Body form

**Caption:** Dorsal view of *Petrolisthes elongatus*

**Source:** Karen Gowlett-Holmes, Karen Gowlett-Holmes



**Full size images available at <http://www.padil.gov.au>.**